

bott modulo3



lightweight design



innovative system

added functionality

Introducing
the bott modulo3 range

Contents

	Page
Overview	4 - 5
Flexible efficiency	6 - 7
Electric vehicles	8 - 9
Crash tested	10 - 11
Frame	12 - 13
Bulkhead	14 - 15
perfo storage	16 - 17
Case holder	18 - 19
Shelf	20 - 21
Cable shelf	22 - 23
Systainer ³	24 - 25
Organizer	26 - 27
varioSlide	28 - 29
bottBox	30 - 31
Flooring options	32 - 33
Accessories	34 - 35





■ work ■ smart ■ bott

About

Bott Storage Systems is part of the Bott Group, a world wide leader in the manufacture and supply of in vehicle equipment, with over 90 years experience.

For small, medium and large vans, bott modulo3 is an innovative and efficient racking system, developed for sole traders through to large fleet operators. The system provides quality with value solutions - robust, yet lightweight, it's easy to maintain and regulation compliance.

bott uno3 has been crash tested to comply with ECE R17 standards - primarily for safety but also for peace of mind.





Overview

The bott modulo3 system is equipped with clever features; such as underfloor solutions, tie-downs and in-shelf organisation kits. The unique design follows the profile of the vehicle, using usually wasted areas to create ergonomic storage, leaving a clear central loading bay. Professional and reliable, this efficient solution combines effective organisation with value for money.

This brochure provides an introduction to the bott modulo3 concept and an overview of the product.

For more information about bott vehicle conversions and services, visit:

www.bott-group.com.au

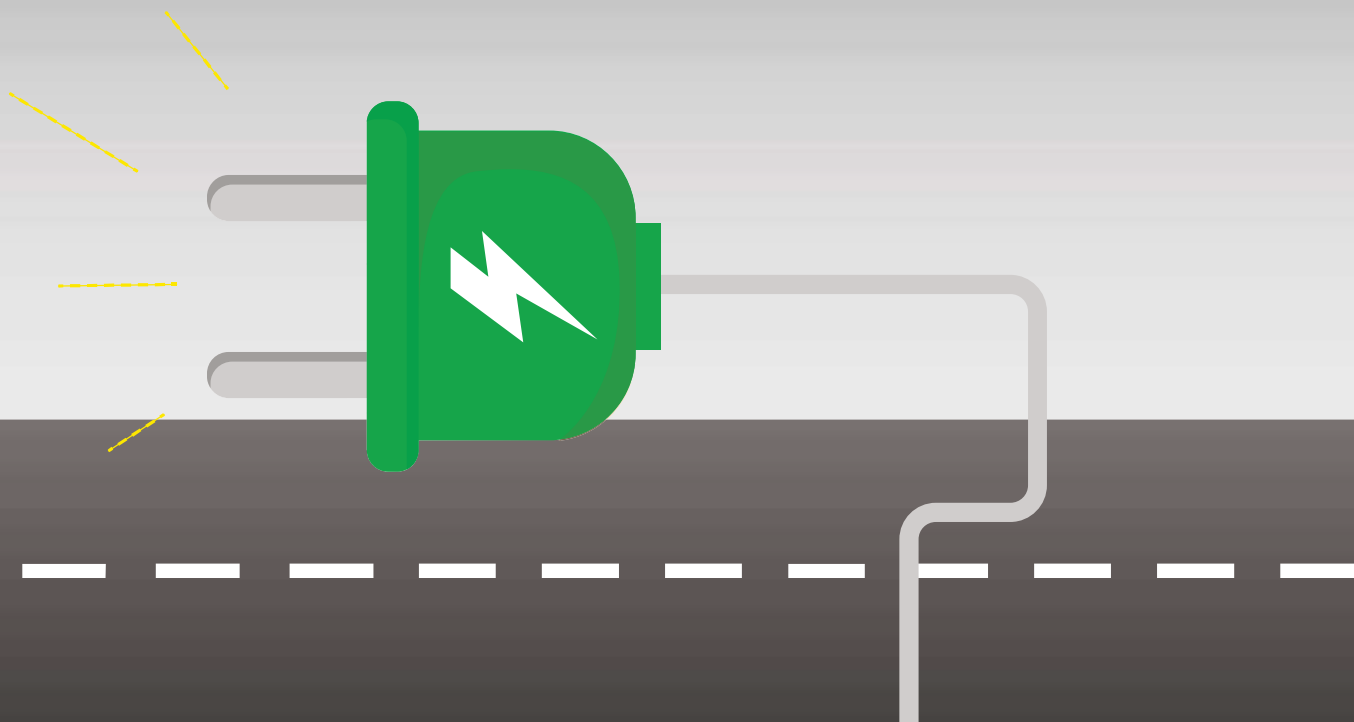




Flexible efficiency

- We understand that businesses and roles can evolve over time. The bott modulo3 concept helps to maximise the use of a vehicle, throughout its whole life cycle.
- Fully customisable, the innovative design allows for future adaptation. Shelves, drawers and other accessories, can be modified to suit changing needs.
- Due to the intelligent frame design, bott modulo3 provides a sustainable solution. Racking, storage panels and accessories; are easily transferable between similar van types in the future.





Electric vehicles

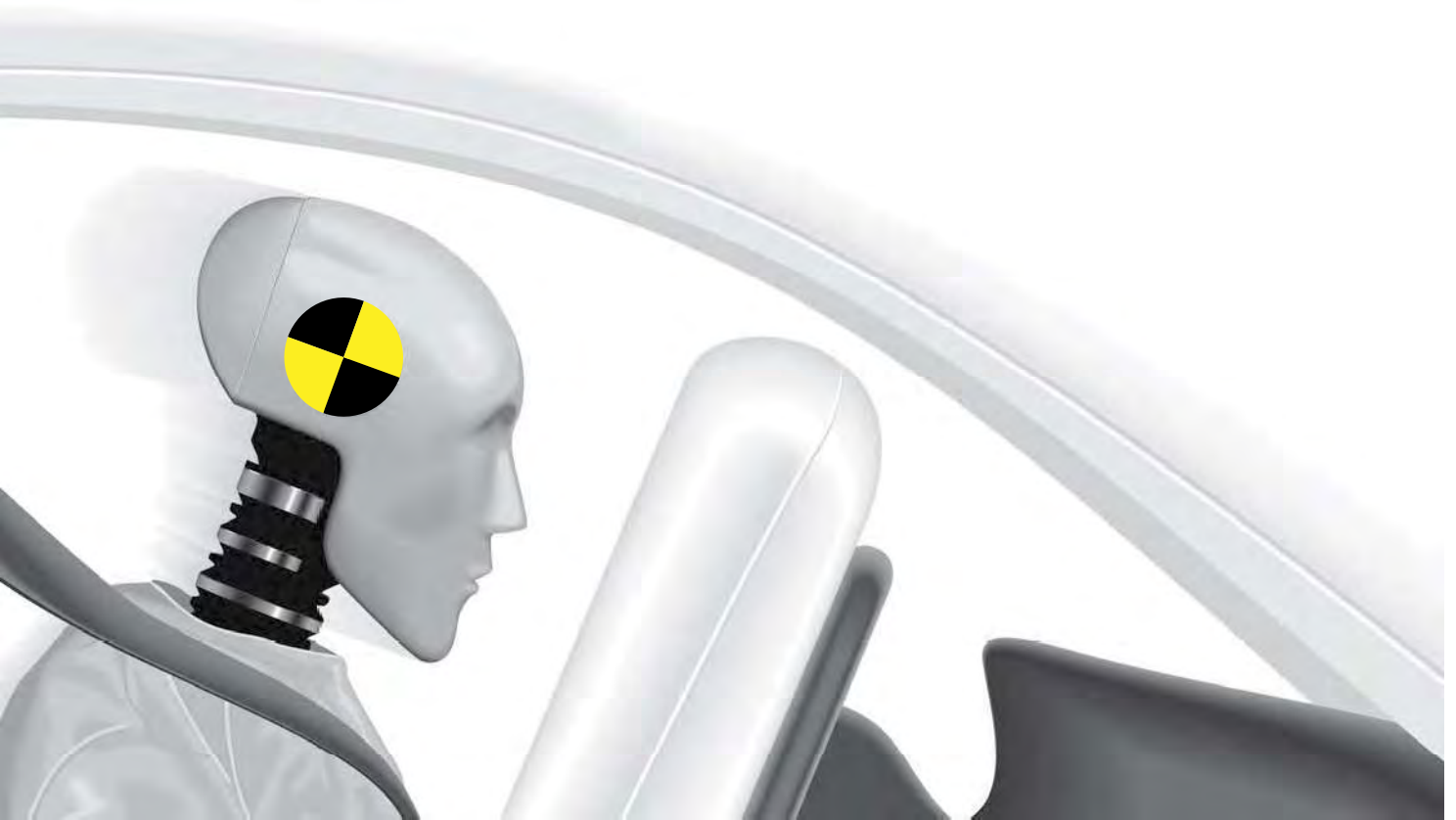
- We recognise the growing demand for electric vans. EV's bring significant advantages to any business, providing both financial efficiencies and environmental benefits. The power to run and charge the vehicle is considerably cheaper than the diesel equivalent.
 - EV technology has led manufacturers to rethink their approach to vehicle architecture. bott modulo3 racking has been developed in line with the evolution of electric vehicles.
- Our no drill racking solution is ideal for fitting around your vehicle's encased floor-mounted battery setup.
- With weight being a key factor in battery efficiency, van racking that is light in weight is essential for electric vehicles.

Before



After





Crash tested

- bott modulo3 racking has been designed with safety at the forefront. Weak, poorly secured racking can be extremely dangerous, even at low speed impacts.
- bott modulo3 racking is fully crash tested to ECE R17 standards. The crash test simulates the collision of the vehicle with an obstacle at a speed of 50km/h. Independent experts conduct the tests with a fully-loaded vehicle. The load on the components are equivalent to those experienced during a traffic accident.
- The tests particularly focus on the fixing points to the bodywork, the floor and the sidewalls of the vehicle, as well as the overall construction of the van racking.
- We also pay close attention to all moving parts. The system is designed to keep tool cases and storage boxes firmly in place during transit and optional extras such as anti-slip mats and lashing straps, help prevent loads from sliding around.





Frame

- Frames are designed to be modular between vehicles of the same size category.
- Designed to fit the profile of the van, optimising maximum space efficiency with minimal impact on the central load area.
- The fully MIG welded frames with reinforced folds are constructed from 2mm thick steel, providing a solid base for accessories to be attached.
- Epoxy powder coated finish in RAL7016 (Anthracite grey) protects the frames from general wear and tear.
- The integral load restraint feature on the base rail, allows for the secure fixing of loading straps.
- Perforated end panels provide extra storage options, when used with our perfo accessories.

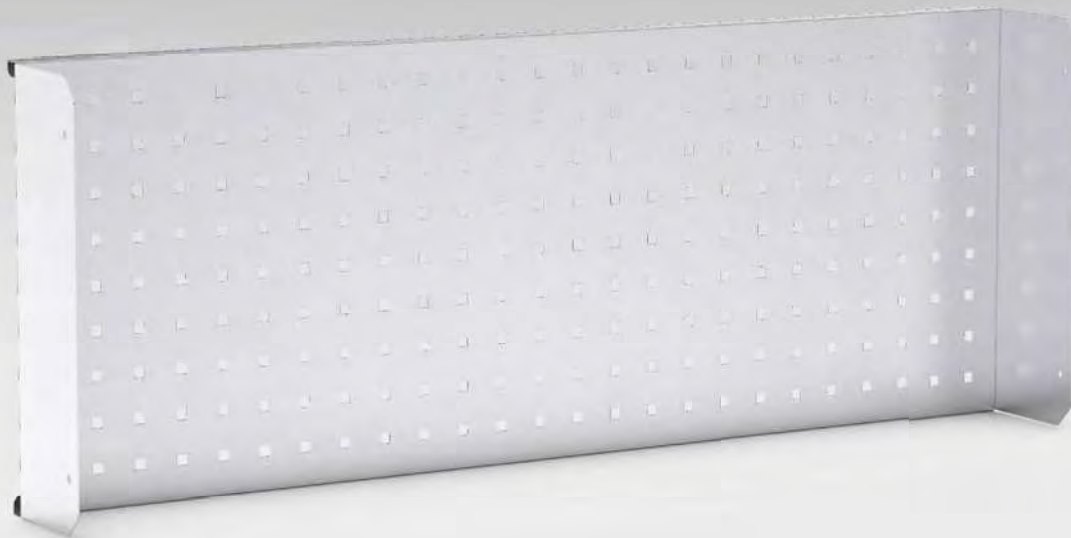




Bulkhead

- Bulkhead modules have been designed to fit securely in front of the bulkhead of your van, utilising what would otherwise be wasted space.
- Similar to the side modules, they can be used to store a wide range of tools, equipment and accessories.
- The bulkhead module can either come as a stand-alone solution, or used in conjunction with side modules. It can also be configured to maintain access to the load through hatch, if your van has this feature.





perfo storage

- Perforated panels allow for the flexible integration of a wide range of mounted tool holders and accessories, providing visible storage and easy access.
- Our perfo range is iconic in the bott family, being one of the original product ranges. The 9.2mm perforated squares with a pitch of 38.1mm, haven't changed since its origin in 1980.
- Folded from 0.8mm galvanised steel, perfo panels come in a range of sizes and can be purchased individually, or within a configured module.
- A wide range of zinc plated or plastic holders, are used to store a variety of tools and accessories; from screwdrivers, paper rolls and cable reels, to fire extinguishers and first aid kits.
- Accessories are simply fixed to the perfo panel using a small plastic lock, rotated at 45 degrees to secure in place.
- Frame-end perfo inserts and rear door perfo panels, make use of wasted space to provide further storage options.





Case holder

- Designed to sit at an optimal angle, preventing tool cases from sliding out during transit.
- Safely stores power tool cases, up to 510mm wide.
- Using the plastic stoppers supplied, smaller cases can be slotted in securely to prevent them from moving around.
- The holder can be positioned at a desired height, to allow for varying sized power tool cases.

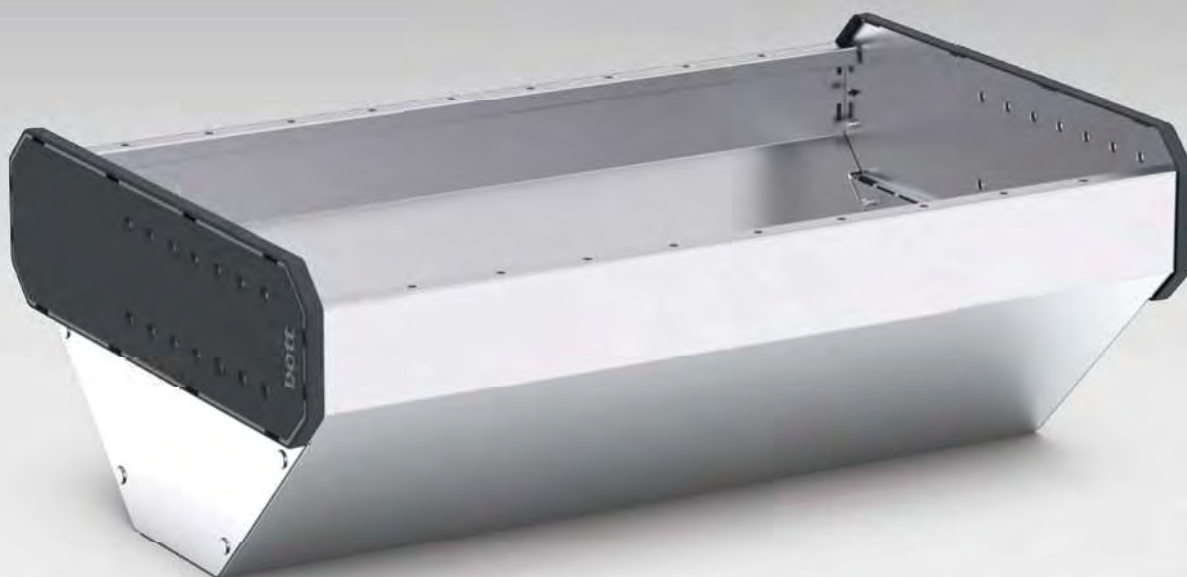




Shelf

- Formed from 0.8mm galvanised sheet steel, with clip on plastic end caps to protect the corners, our shelves are our most diverse accessory in the range.
- Each shelf comes with an anti-slip mat as standard, preventing loose items from sliding around and damaging during transit.
- Our shelves come in a variety of depths, (135/185/260/337mm).
- Optional aluminium dividers and plastic bin kits are available for every shelf and can be used to secure loose items, small fixings and fittings.
- Options to add bottBox kits for 260mm and 337mm deep shelves.





Cable shelf

- A deep, trough style shelf for safely storing cable reels, allowing for quick, easy access on the job.
- This shelf has a maximum load capacity of 25kg, accommodating reels of up to 300mm in diameter.
- Available in 2 widths (530/418mm), each with an internal depth of 302mm and height of 195mm.
- Optional aluminium dividers are available, to help safely store and separate items.





Systainer³

- The new Systainer³ generation enables you to be more mobile than ever before. Festool & TANOS have teamed up with bott, to develop a mobility system flexible for both on & off-site working.
- bott modulo3 racking has been specifically designed to hold the new Systainer³ generation of cases, with simple integration via dedicated side rails.
- A practical and sturdy case system, the smart choice for the storage and transportation of power tools, hand tools, small parts and consumables.
- The tried and tested T-LOC locking element allows the Systainer³ to be connected to many additional system accessories. The patented system also enables you to open, close and connect it - with just one hand.
- The front and top carry handles allow for easy transportation, in and out of your van.





Organizer

- Transparent lid allows contents to be visible, enabling you to find the right nuts, bolts and screws in no time.
- Multifunctional T-LOC: open, close, connect – with just one twist.
- Optional labelling via 2 card slots on the front of the case, in standard bank card format.
- Can be stacked and connected to many other Systainer products.
- Load capacity: 20kg.





varioSlide

- bott varioSlide serves as a removable drawer within the racking system, ensuring small parts are always to hand and easy to reach.
- Two widths (mm):
Internal dimensions 352w x 175h x 290d.
Internal dimensions 400w x 160h x 280d.
- Optional aluminium dividers available.





bottBox

- Robust and durable, the award winning bottBox systematically organises small parts & consumables.
- Innovative properties enable simple cleaning and component retrieval.
- Transparent front panel optimises bin capacity, whilst retaining visibility of contents.
- Label slots along the front and back help identify the contents, quickly and efficiently.
- Optional dividers available.
- Two depths:
 - 227d available in 1 width (130mm)
 - 298d available in 2 widths (130mm/264mm)





Floor options

We've designed our bott modulo3 system so that it is compatible with the manufacturer's supplied floor. Alternatively, customers can choose a fully profiled bott floor which has been developed to integrate with the system, constructed from 12mm hardwearing water resistant ply, complete with a cross-hatched, non-slip durable grey surface and a vehicle specific fixing kit.

Underfloor

bott modulo3 underfloor deck kits, help you to get more from your van. Systems mount between the side racks and have been load tested to 200kg (smaller decks) and 300kg UDL (large decks).

Features, such as an adjustable divider panel and robust Eurobox options, enable efficient space organisation. All underfloor systems feature integrated mounts for bott loading straps to secure heavy and loose loads.

- Height of deck: 375mm.
- Useable height beneath deck: 320mm.
- Depending on van type, full and half deck underfloor systems are available.





Accessories

- Effective organisation is key when working from a vehicle. A wide selection of integrated accessories, enable the clear and systematic storage of tools, equipment, consumables and small parts. From underfloor storage for valuable items, to clever perfo features for easy access – no space is wasted.
- In day-to-day working, choosing the right accessories can help boost efficiency and productivity. Users can find what they need more quickly, identify when stocks are running low and prevent damage to materials.
- For more information on the comprehensive range of accessories available, contact one of our team: sales@bott-group.com.au



Email: sales@bott-group.com.au

Tel: 1300 782 702

www.bott-group.com.au

